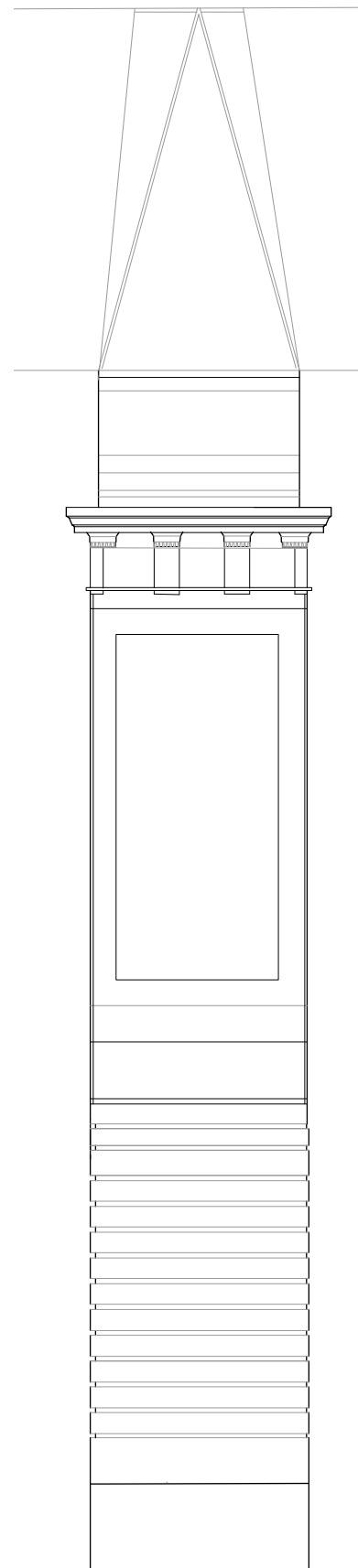


gevel 1



gevel 2



gevel 3



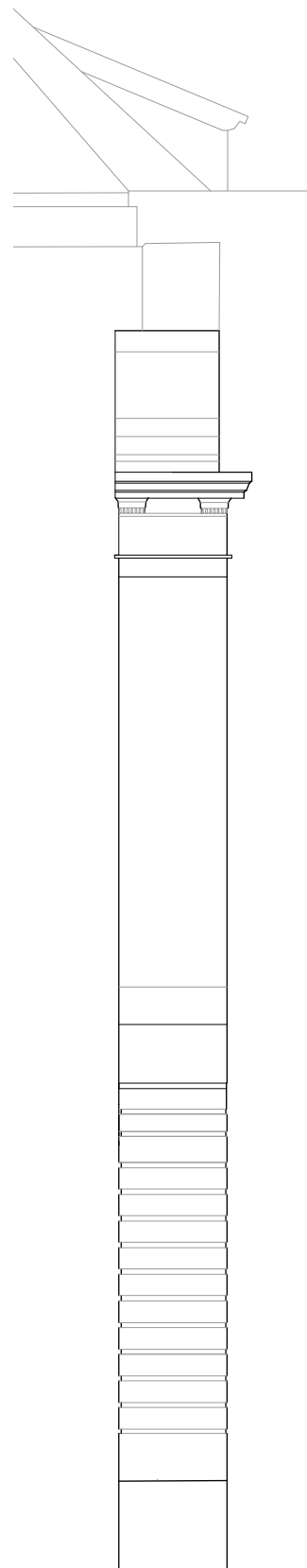
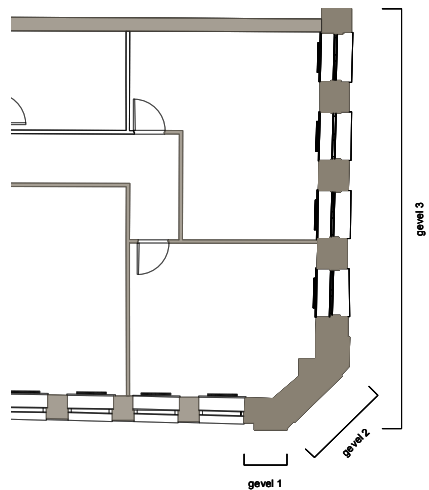
GEVELAANZICHT  
BESTAANDE TOESTAND



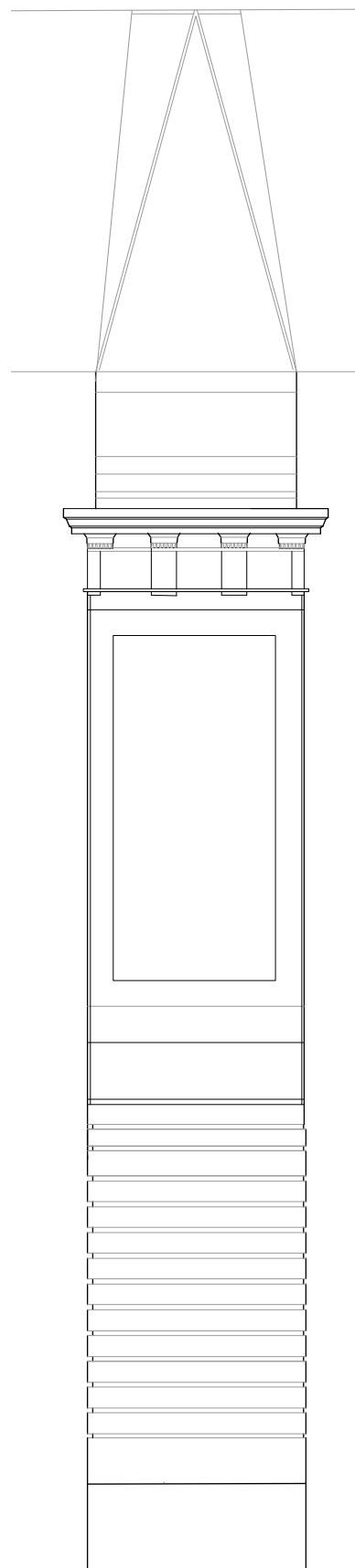
Studio Roma bv in onderaanneming van Conix RDBM

Renovatie Kabinetsgebouw Koolstraat 35 te Brussel

24.06.2025



gevel 1



gevel 2



gevel 3



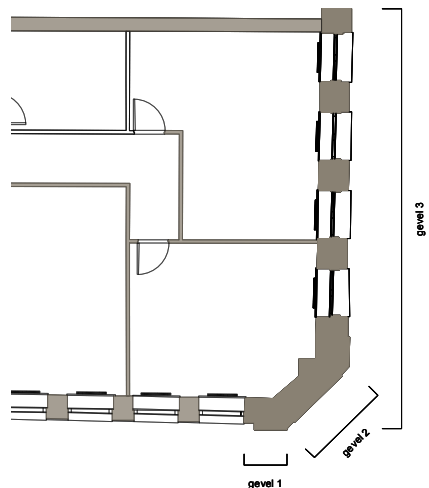
GEVELAANZICHT  
NIEUWE TOESTAND

24.06.2025

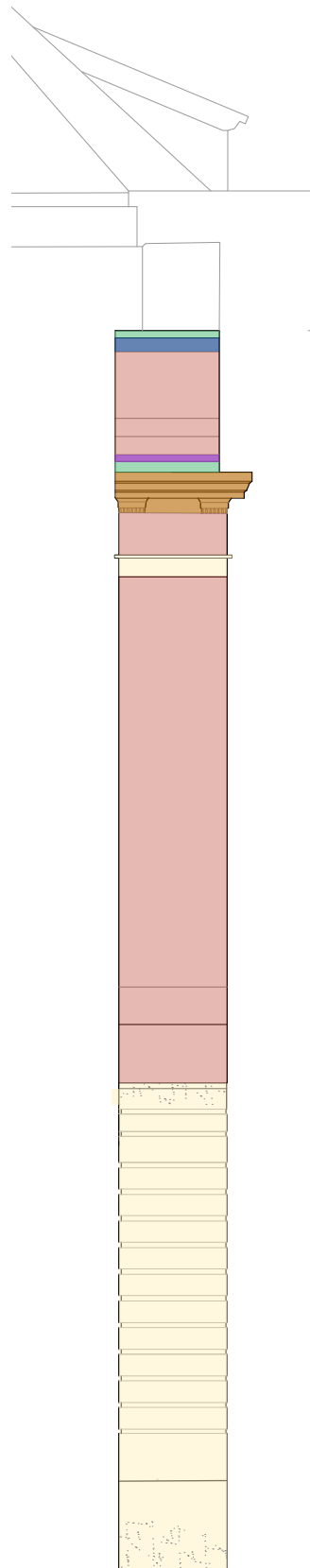


Studio Roma bv in onderaanneming van Conix RDBM

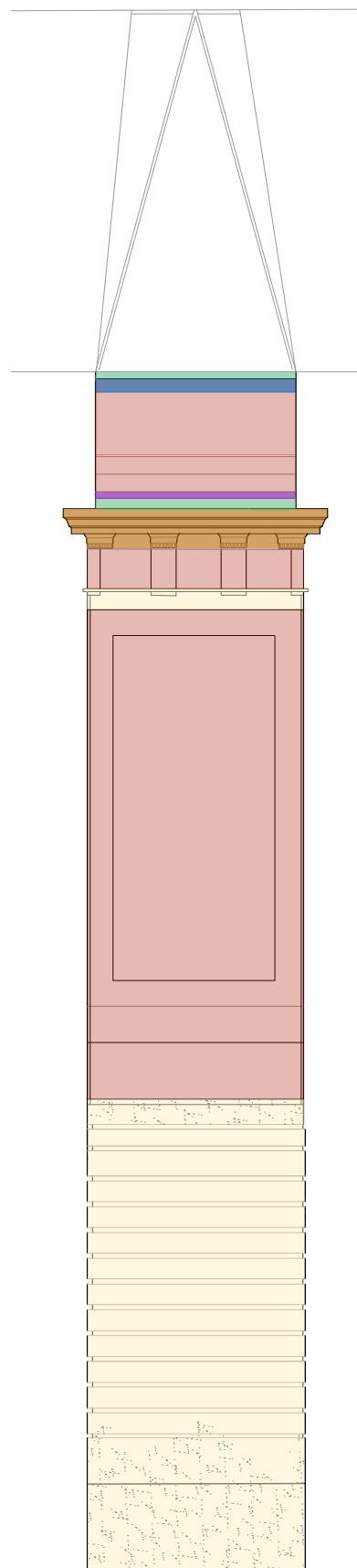
Renovatie Kabinetsgebouw Koolstraat 35 te Brussel



- witte steen
- blauwe steen
- baksteen
- hout
- leien
- zink
- ijzerzandsteen
- lood
- beton
- anti-graffitiverf
- barst
- haarscheurtjes
- vervuiling



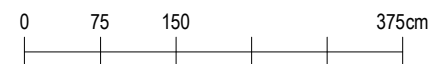
gevel 1



gevel 2



gevel 3



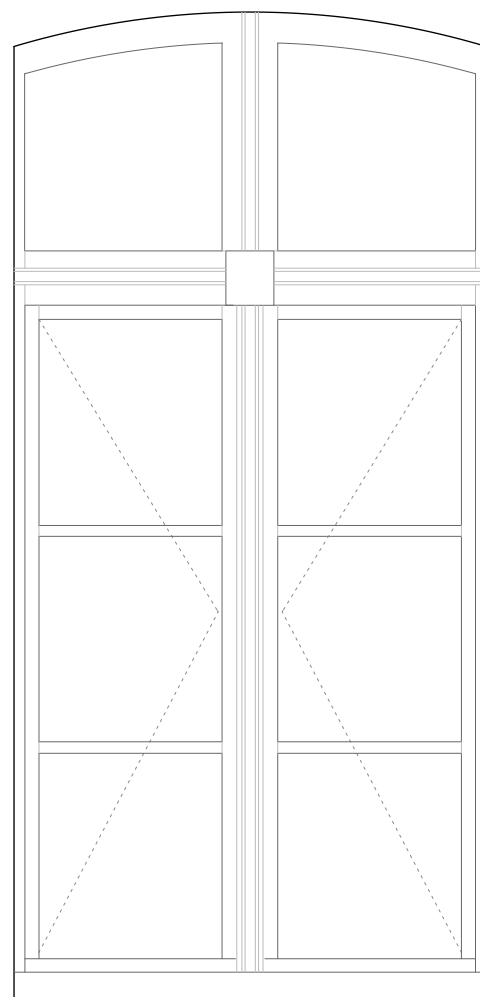
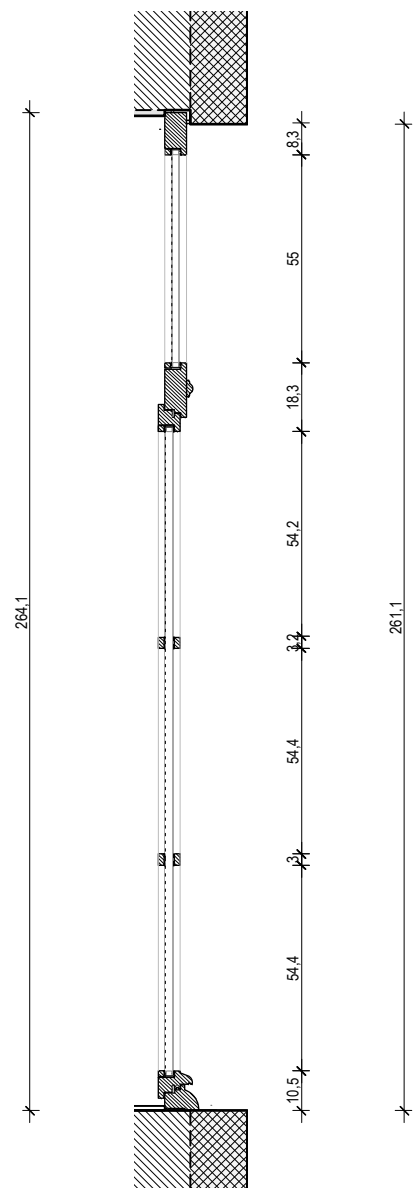
Studio Roma bv in onderaanneming van Conix RDBM

Renovatie Kabinetsgebouw Koolstraat 35 te Brussel

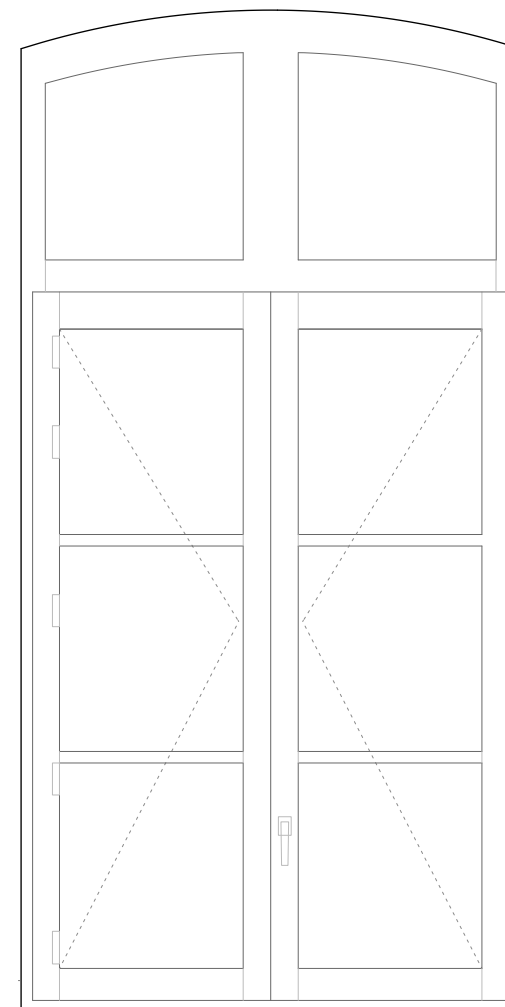
MATERIALENPLAN & SCHADEBEELD

BESTAANDE TOESTAND

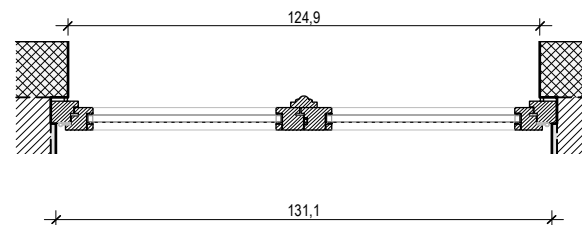
24.06.2025

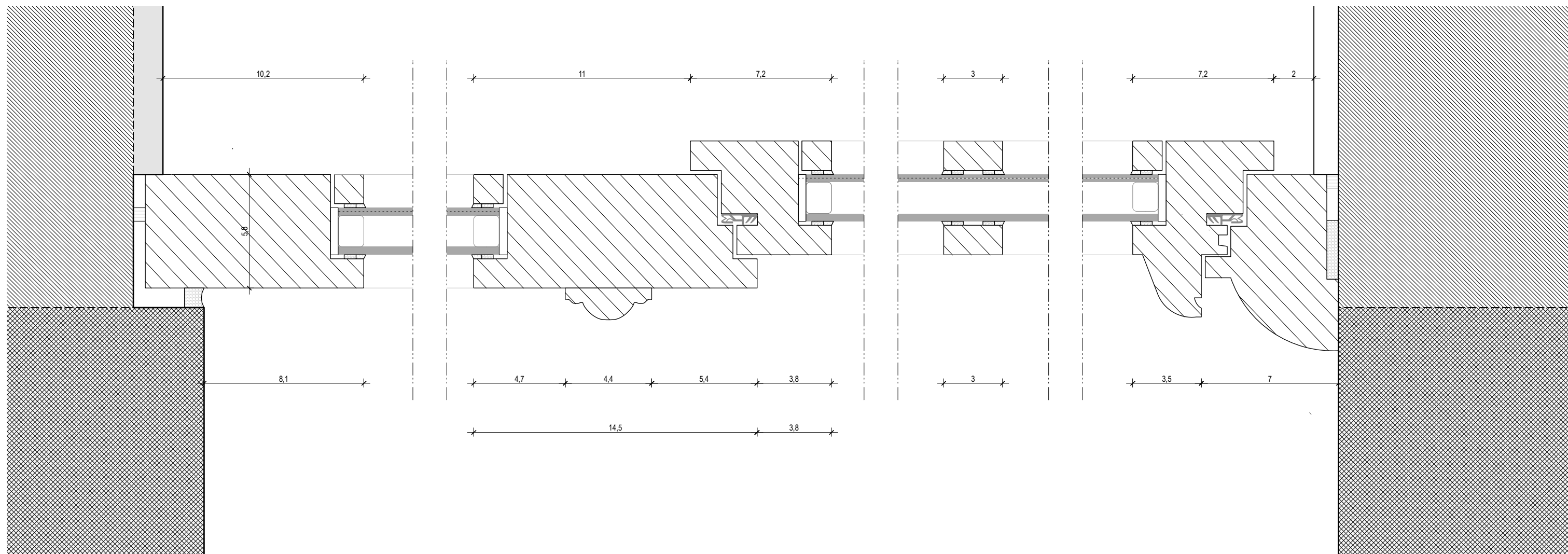


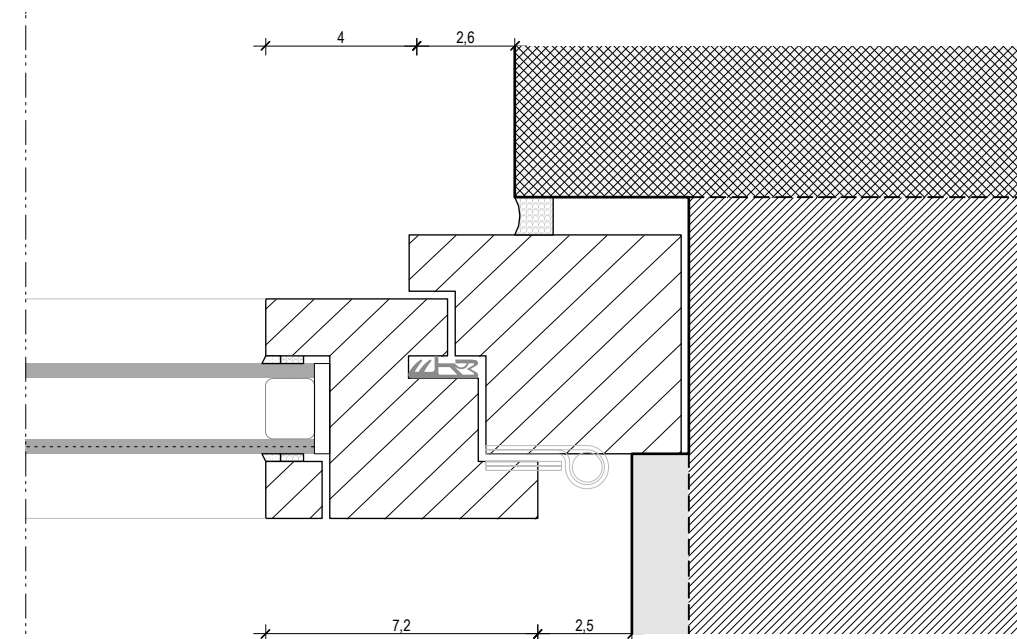
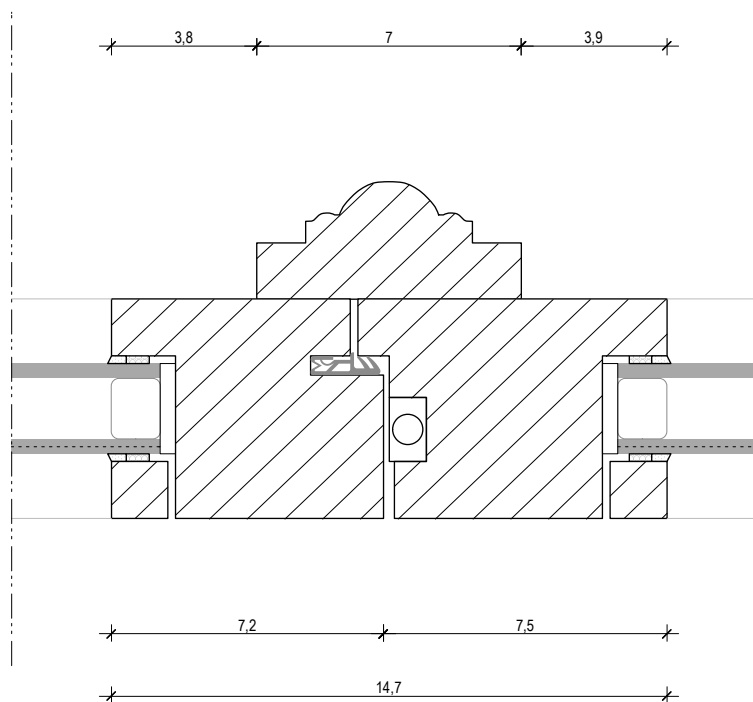
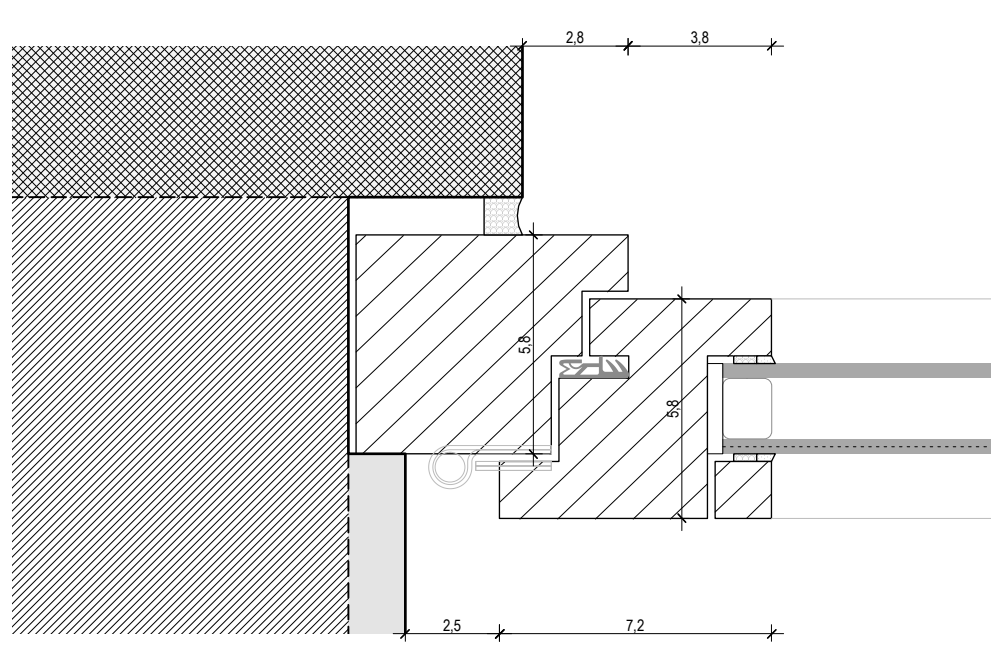
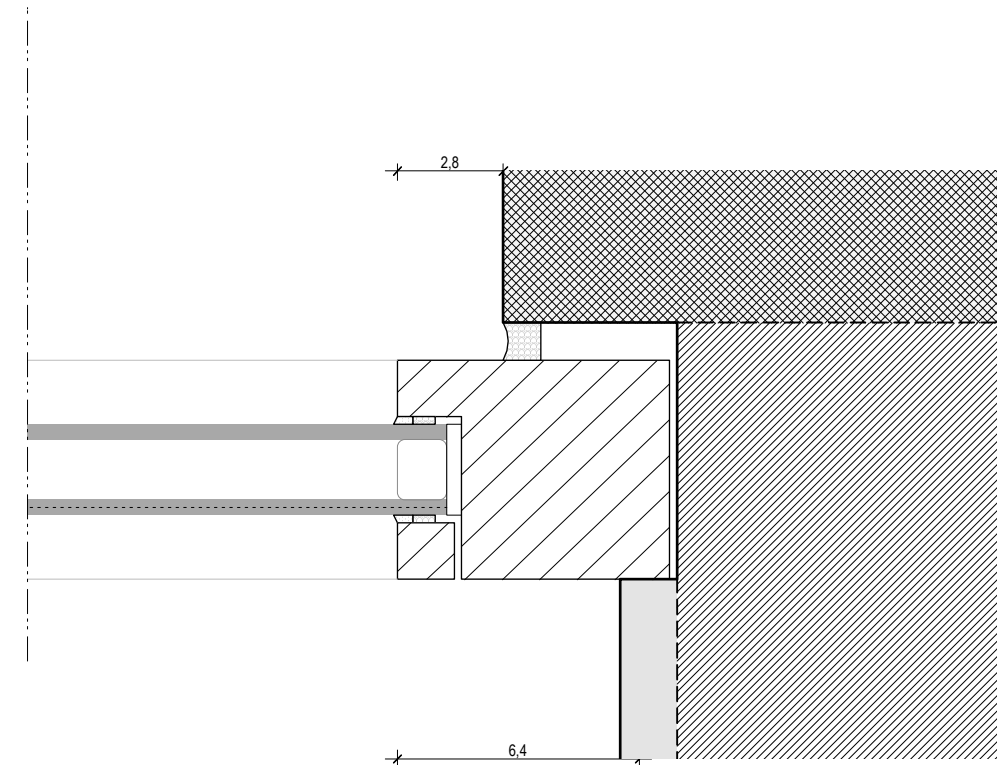
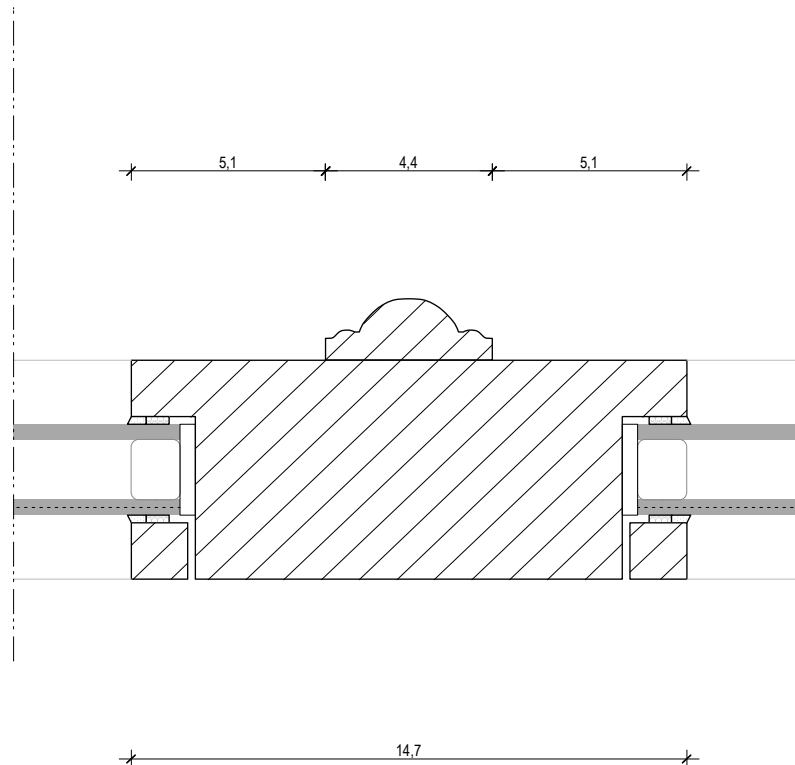
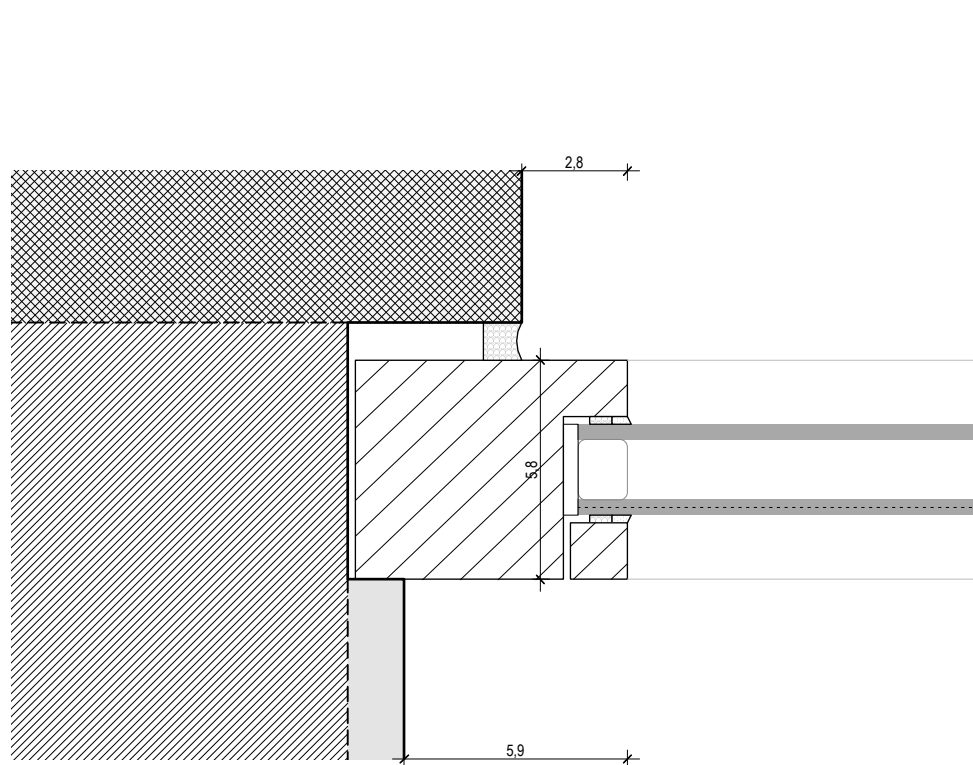
UITENAANZICHT

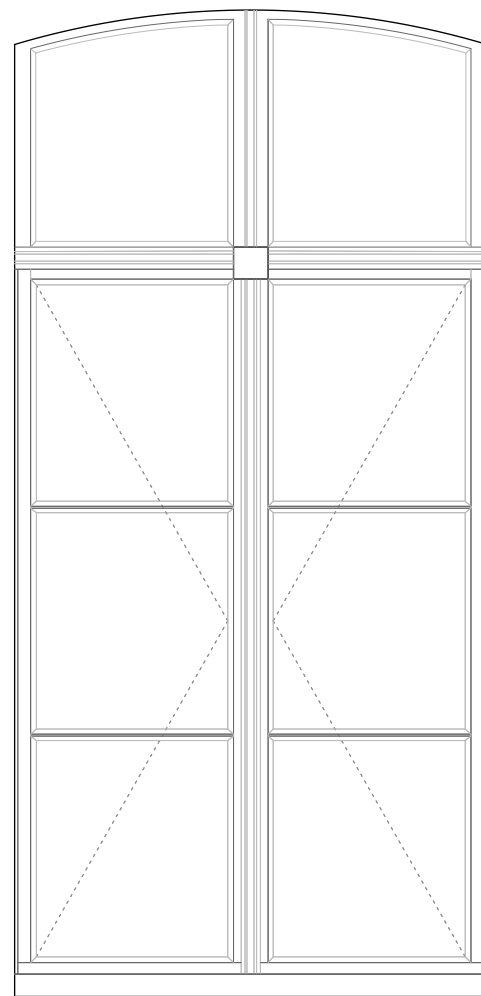
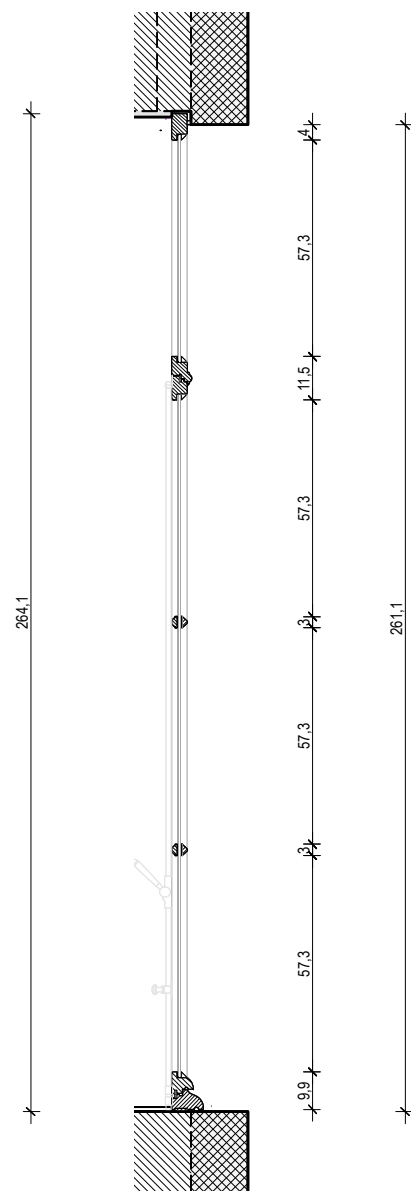


INNENAANZICHT

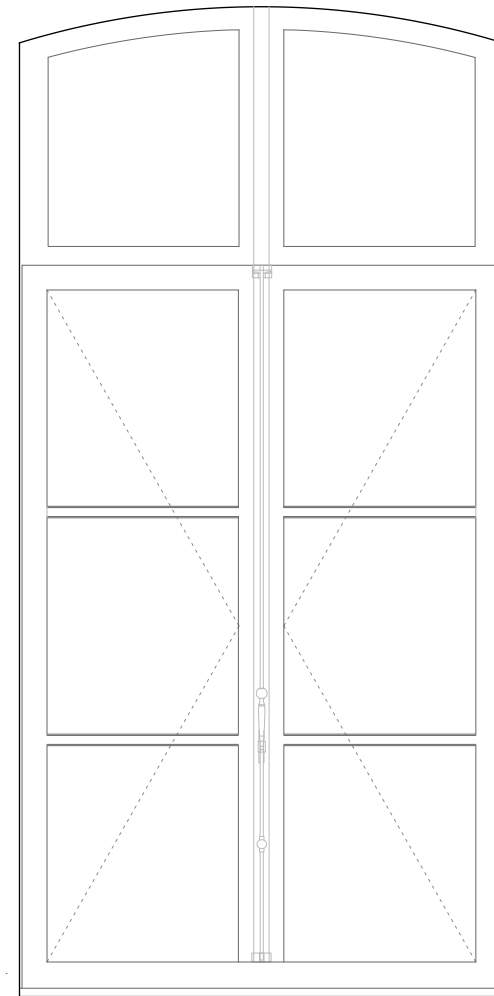




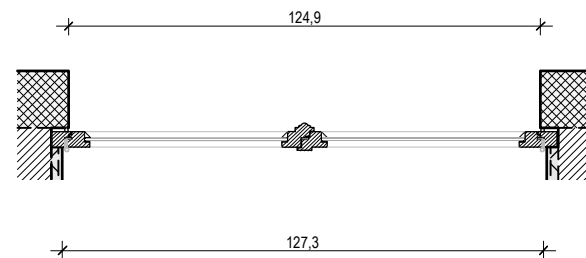




BUITENAANZICHT



BINNENAANZICHT



Studio Roma bv in onderaanneming van Conix RDBM

Renovatie Kabinetsgebouw Koolstraat 35 te Brussel

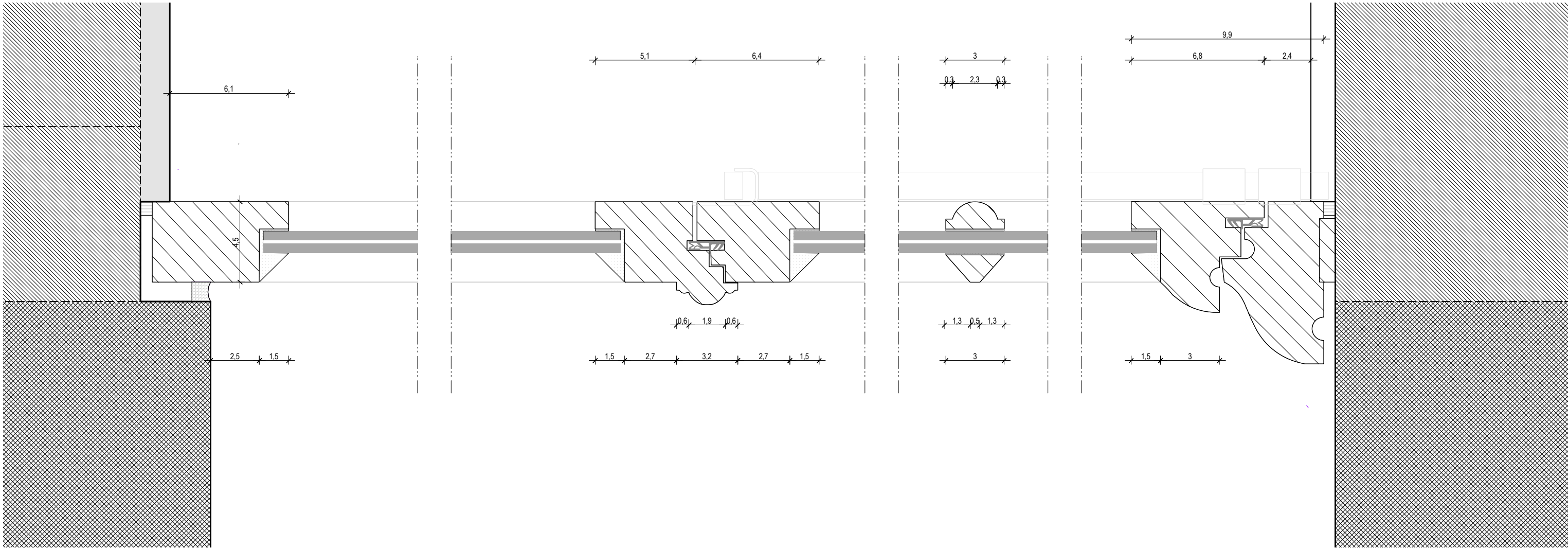
PRINCIPETEKENING  
alle afmetingen dienen ter plaatse te worden gecontroleerd

BINNEN- & BUITENAANZICHT

NIEUWE TOESTAND



schaal: 1/20 24.06.2025 NT 01/03



Studio Roma bv in onderaanneming van Conix RDBM

Renovatie Kabinetsgebouw Koolstraat 35 te Brussel

PRINCIPETEKENING  
alle afmetingen dienen ter plaatse te worden gecontroleerd

VERTICALE SNEDE

NIEUWE TOESTAND



schaal: 1/2 24.06.2025 NT 02/03



